



# Diagnose and collaborate anytime, anywhere

Philips IntelliSpace Portal

**PHILIPS**

sense and simplicity

# Your world in the palm of your hand

Imaging is at the heart of healthcare. The radiology department is one of the busiest places within any healthcare environment. So, you need to be more efficient and effective than everyone else.



IntelliSpace Portal is an access anywhere solution for multimodality clinical review, analysis, diagnosis and collaboration. It reduces the need to go to special workstations to interpret CT, MR and Nuclear Medicine images.

The key strengths of the IntelliSpace Portal are:

- **Rich clinical applications for virtually all specialties:**

Unlock the full potential of your scanners using an industry-leading portfolio of advanced clinical applications allowing you to quickly quantify and diagnose in order to provide the best possible patient care.

- **Exceptional multimodality Access Anywhere:** Proven #1 in Advanced Visualization\* Portal gives you access to the clinical functionality, workflow and collaboration tools from any device that can connect to the facility's network with a single applications server and integrated with PACS.

- **Collaborate with ease:** Keeps radiology at the center of patient care by providing the tools to create actionable information throughout the enterprise. Use real-time medical networking tools to collaborate with virtually anyone in the world on your cases.

## A proven pedigree

IntelliSpace Portal is based on the Extended Brilliance Workspace, ranked #1 by KLAS in its 2008 and 2010 "Top 20 Best in KLAS Awards: Software & Professional Services" for Advanced Visualization. KLAS, an independent research firm specializing in monitoring and reporting performance of healthcare information technology vendors, announced that the Philips Brilliance Workspace was the category leader in Advanced Visualization.

\* © 2010 KLAS Enterprises LLC. All rights reserved.



## Imaging 2.0

This is a great time to be in imaging with all of the new innovation, but you have told us that you face unprecedented demands for stronger service, cost reduction and patient loads.

Imaging 2.0 (two-dot-oh) from Philips is a new approach to clinical collaboration and integration, patient focus, and improved economic value to help radiologists find success in the new realities of practicing medicine.

Imaging 2.0 is our new approach to answering the challenges that we heard from over 3,000 radiologists during the past year.

It's a revolution inspired by the belief that better collaboration leads to better outcomes at every level. Enabled by advanced technology, Imaging 2.0 offers new levels of performance, integration, and patient comfort across modalities.

Web 2.0 is used to describe the evolution of the web from being data-driven to user-centric. It is about openness and collaboration to achieve what was unimaginable just a few short years ago. Imaging 2.0 promises to do the same.

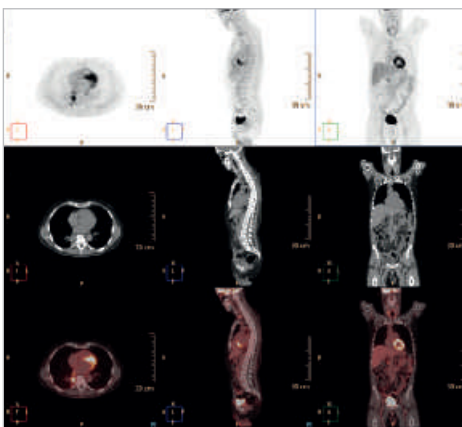
# Rich multimodality applications anywhere



There are more than 30 advanced clinical applications delivered via Portal. These applications range from CT and MR to Nuclear Medicine and many contain rich, quantitative data. This gallery displays just a few of those rich applications. A full clinical demonstration of the Portal capabilities can easily be arranged for you to witness your world in the palm of your hand.

## Access images and tools anytime, anywhere

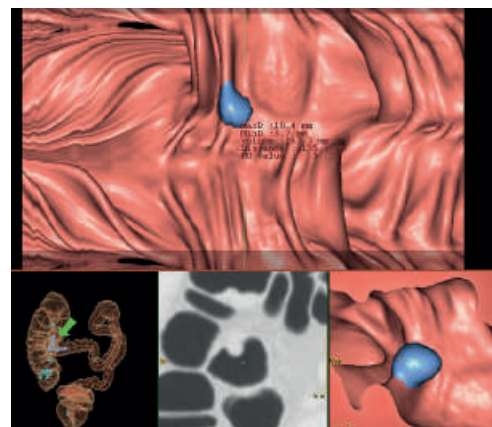
IntelliSpace Portal provides enterprise-wide NM viewing, including SUV measurements (cursor and ROI), alpha blending and slab and 3D volume-rendered display.



Share fused images with oncologists and surgeons during multidisciplinary meetings, conferences, and tumor boards.

## Reduce reading times in virtual colonoscopy

Exclusive to Philips, CT Virtual Colonoscopy with Perspective Filet View allows clinicians to perform a “virtual dissection” of the colon by unfolding or unrolling along the centerline and displaying a portion of the colon for inspection, providing a 100% view of the surface of the colon with no image or hands-on manipulation.



CT Virtual Colonoscopy provides power and flexibility, and can help reduce reading times to just five to 10 minutes compared with 30 to 40 minutes previously.

### Track tumor progression for more personalized medicine

Multimodality Tumor Tracking offers efficient tools to assist clinicians in monitoring change in disease status including disease progression or assessment of therapy response using sequential PET/CT, SPECT/CT, MR, and CT exams, with automatic segmentation of target lesions and quantified results over time.

The application provides automatic and standardized measurements of tumor progression, including RECIST, WHO, and PERCIST measurements, and tumor burden calculation.



Exclusive to Philips, Multimodality Tumor Tracking automatically quantifies anatomic and metabolic changes to allow for more personalized treatment decisions.

### Calculating MR diffusion

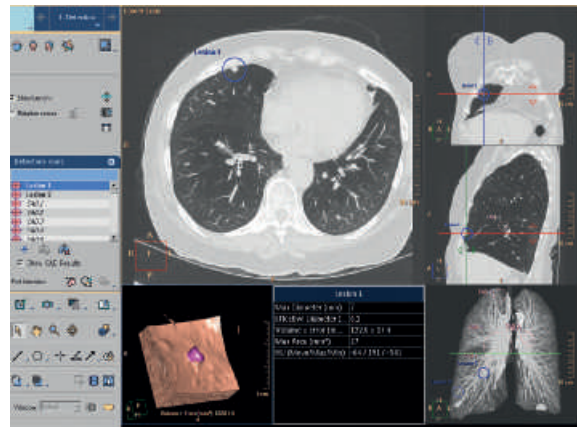
MR Diffusion allows the processing and calculation of various diffusion maps from an appropriate set of diffusion-weighted images. The map types include ADC, eADC, FA, and trace weighted. Registration of the source diffusion-weighted images may be performed.



Includes capabilities such as user-selected color coding of output maps and user-selected choice of specific b-values for the end calculation.

### Assess lung nodules over time

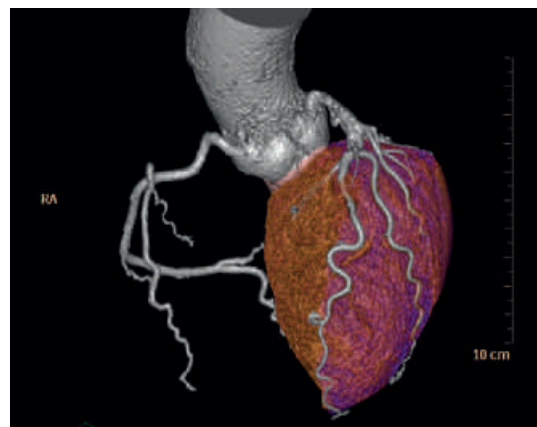
CT Lung Nodule Assessment (LNA) can provide quantitative information about the size, shape, and change over time of physician-indicated lung nodules. The package provides one-click volume segmentation, advanced reporting for rapid distribution of paper and/or electronic results, and the ability to compare studies by scrolling through multiple linked datasets.



CT LNA can help more accurately assess lung-nodule changes over time and the nodule doubling time.

### Fusing cardiac CT-NM

Comprehensive Cardiac Analysis (CCA) incorporates support for myocardial perfusion imaging (MPI). CCA with the CT-NM Fusion option allows loading the following NM datasets simultaneously with the CT data: rest – gated and un-gated, stress – gated and un-gated.



CCA with the CT-NM Fusion option allows loading NM datasets simultaneously.

# State of the art in medical networking

## Seamless collaboration

Borrowing the best aspects of social networking, Collaborator, provides instant access to peers and specialists around the world. Giving you the ability to share image results and views from the portal applications with other clinicians by using a standard web browser (note: all web browsers may not be supported). The Portal Web Collaborator requires no proprietary software download. Collaborator gives you the power to leverage all available resources to provide the best possible patient care.

## Live views with live tools

Users can initiate real-time collaboration sessions via instant-invitation or by scheduling using standard PC scheduling tools. When in the collaboration session, users share the same live view of the image in the web-based image viewer and are able to interact with this shared image view using various tools for annotation and control.

## Send links to images

Collaborator also allows you to email links of the results and image results from CT and Nuclear Medicine studies to authorized users. The recipient is able to click the link to get to the image(s) in the web-based viewer.

## The server keeps it simple

IntelliSpace Portal provides multimodality display of CT, MR and NM datasets. Proprietary technology streams display to the client device over any broadband internet connection through the hospital's virtual private network without the need to download the CT/MR or NM data to the client PC. The 'heavy lifting' and complex processing of the data is done on the server.

## Integrates with any PACS

IntelliSpace Portal features proven open interfaces for integration with Philips PACS and PACS from other vendors.\*

## Attractive to own, year after year

IntelliSpace Portal is updated continually through the server. Regular feature updates and virus protection is 'pushed' to your portal without you having to initiate the process. This provides the desired simplicity and scalability you may require while eliminating the need to acquire multiple workstations by modality and specialty over the years. Our goal is to provide you with the support that your facility is always at full potential, remaining state-of-the-art for the clinical needs of today and tomorrow.



## Twice the view

Dual monitor-ready to enhance workflow.

\* May require integration work with PACS vendor.



Collaboration opportunities include critical care reporting, remote consultation, and peer conferencing.



**Philips Healthcare is part of  
Royal Philips Electronics**

**How to reach us**

[www.philips.com/healthcare](http://www.philips.com/healthcare)  
[healthcare@philips.com](mailto:healthcare@philips.com)

**Asia**

+49 7031 463 2254

**Europe, Middle East, Africa**

+49 7031 463 2254

**Latin America**

+55 11 2125 0744

**North America**

+1 425 487 7000

800 285 5585 (toll free, US only)

Please visit [www.philips.com/intellispace](http://www.philips.com/intellispace)



© 2011 Koninklijke Philips Electronics N.V.  
All rights are reserved.

Philips Healthcare reserves the right to make changes in specifications and/or to discontinue any product at any time without notice or obligation and will not be liable for any consequences resulting from the use of this publication.

Printed in The Netherlands.  
4522 962 70281 \* FEB 2011